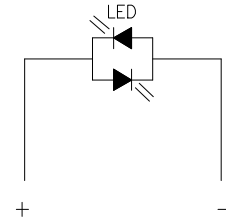


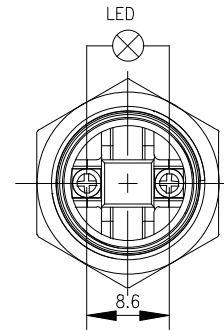
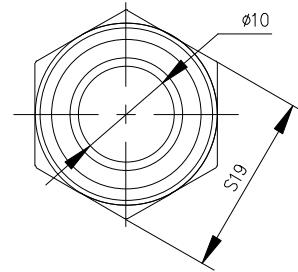
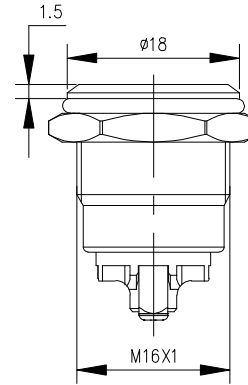
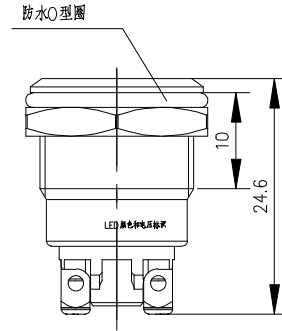
"This Drawing Is Owned by J&V Electronic Science and Technology Co., Ltd., and the Use or Reproduction of All or Part of the Drawing Must Be Approved in Writing by J&V Electronic Science and Technology Co., Ltd."
 此图: 版权归属: 授权使用: 高创电子科技有限公 司 谨 启。

版次 Version	AO	物料编号 Drawing No	
客户名称 Customers		客户料号 Customers No	

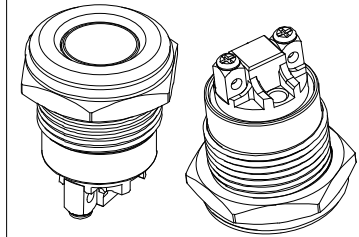
单色电器原理图



紫		P
橙		O
白		W
黄		Y
蓝		B
绿		G
红		R
颜色	色标	符号



轴测图 1: 2



Technical Parameters:

- 1.the surface is clean, even luster;
- 2.rated voltage: AC250V/2A;
- 3.LED rated load: DC5V、6V、12V、24V、36V、48V, AC110V、AC220V ;
- 4.the working environment temperature: -20℃~+85℃ ;
- 5.the wiring form: Insert with matching connector, Welding the wire, pay attention to welding time and temperature;
- 6.Tightening torque: 5-14N.m;
- 7.Appearance material:
Housing: 304/Brass nickel plating/Aluminum alloy oxidation;
Base: PBT ;
Pins: H62 gold plated;
- 8.Installation size: Opening diameter ϕ 16.2mm;
- 9.Explosion-proof level: IK08;
- 10.LED lamp beads life: 40000h;
- 11.Insulation resistance: \geq 1000M Ω .

				产品型号 Model No	18.168.1.5.X.X.2	图纸编号 Drawing No	数量 Quantity		材质 Material
标记 Mark	更改前 Before Change	更改后 After Change	签名 Signature	日期 Date	制图/日期 Drawing/Date	规格 Specifications	零件名称 Parts Name	10A指示灯	表面处理 Surface Transaction
尺寸公差 Dimension Tolerance		GB/T 1804-2000 粗糙度	投影方向 Projection Direction		校对/日期 Collation/Date	Electronic Science & Technology Co., Ltd			
			角度公差 Angle Tolerance	$\pm 1^\circ$	审核/日期 Verifying/Date				